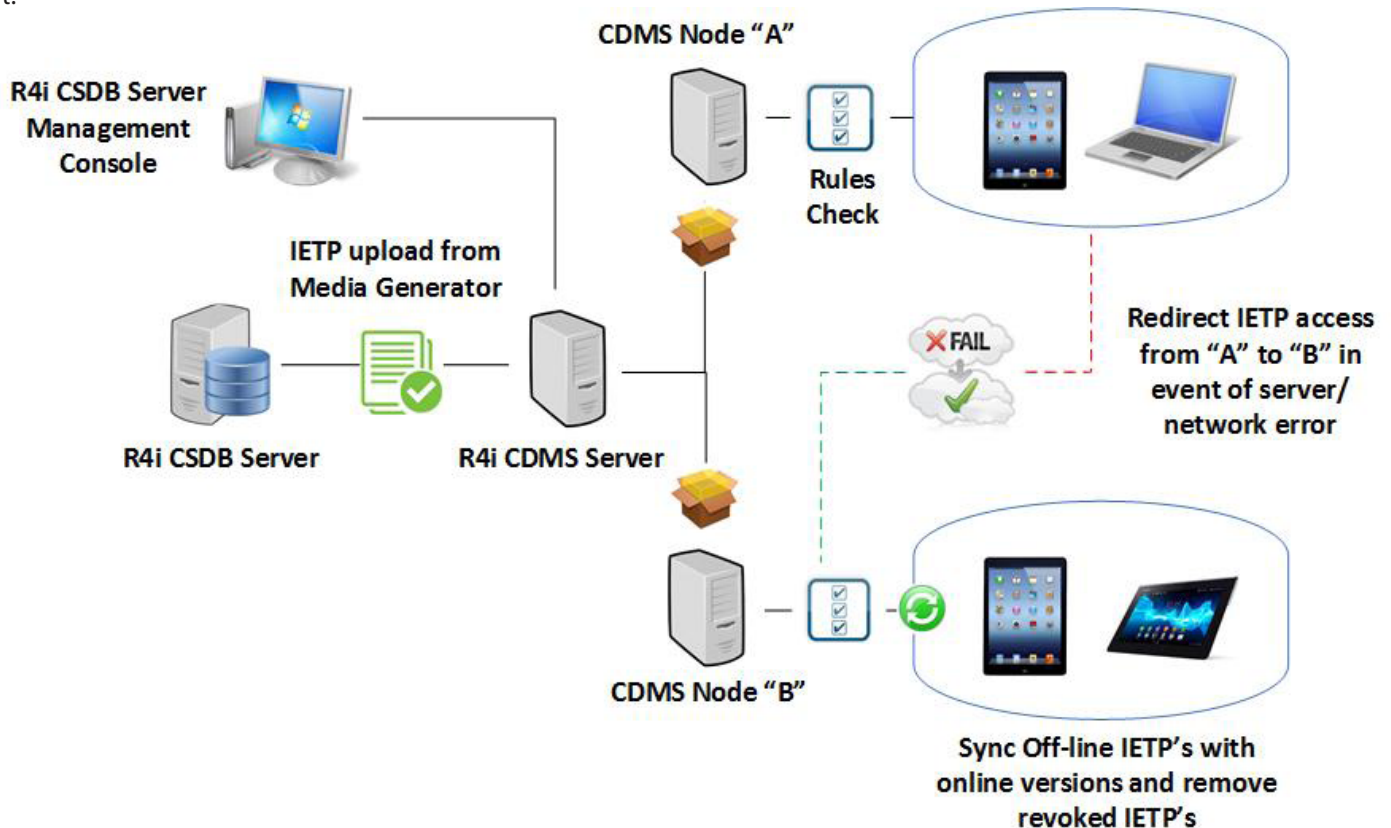


ADG's R4i Content Distribution and Management Server (CDMS) is an IETP Distribution Ecosystem that provides information publishers with control of the distribution lifecycle of their online and offline content.

The CDMS is designed specifically to make the deployment and maintenance of IETP Viewers and IETP content easy for Publication Managers without needing assistance from the IT department. The CDMS system is made up of the CDMS server and CDMS nodes. The use of multiple CDMS nodes is recommended when large deployments of IETP's with R4i Viewer and R4i MobieTP are expected.

Authorized content is generated in the CSDB and uploaded to the CDMS, for distribution based on rules selected by the publishing team. The rules include content access, online or offline access, and content expiration. Superseded IETP's can be remotely removed and the R4i MobieTP and R4i Viewer software can be remotely upgraded when new IETP features are rolled out.



The Content Distribution and Management Server (CDMS) provides total control of Mobile IETP's

Using the web based CDMS Administration console, IETP Websites, offline IETP packages and software updates are deployed to selected CDMS Nodes. Deployment options are then selected based on the organizations requirements, offering the following benefits:

- **Reduce IT staff load** - The IT department can redirect access to online and offline IETP's to different servers without Viewer users needing to change web addresses or network share names.
- **Stage IETP's** – Stage one or more IETP's on CDMS Nodes and only make them visible to R4i Viewer and R4i MobieTP Viewers when ready.
- **Easy IETP Access** – Viewer users can select how they want to access IETP's. Users can access IETP's locally, on a network drive or a web server. Users never need to know web addresses, network shares or where the IETP is stored locally.
- **IETPSync** – While using the Viewer online, users can download a copy of the same IETP in the background for offline use.
- **IETP Updates** - IETP's can change. To avoid users needing to download updated full IETP's, small change packages can be deployed to update the existing local IETP.

- **Maximum Availability** – To ensure technical information is always available, Viewer users are seamlessly connected to one or more IETP access points in the event of a server or network failure.
- **Total Control** - Distribute full IETP's and IETP update packages to one or more internet distribution points without any IT department assistance. Define how IETP's are accessed, removed and updated on PC's and Tablets.

The user only sees a "connect" option in the R4i Viewer and R4i MobieTP applications, but where they connect, what they see, and what they can do with the IETP content is controlled via the CDMS Management console. If enabled, the user can choose to browse online or download and load IETP's onto their Windows or Android Device.

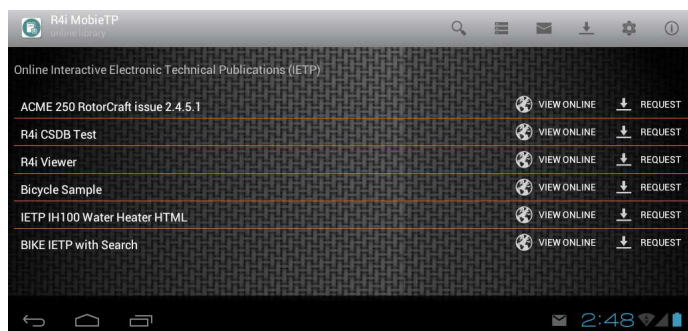
Leverage your technical and operational content with ADG's S1000D IETP Viewers, **R4i Viewer** and **R4i MobieTP** for Android:

R4i MobieTP

Available from the Google Play store, the R4i MobieTP app is a royalty-free application for Android users. Mobile IETP's free technicians, operators and crews from desktop PC's and bulky laptops at minimum cost to an organization.

ADG's Mobile IETP Viewer for Android utilizes single source IETP packages generated from the R4i CSDB Server, including support for applicability.

IETP packages are generated from the R4i CSDB's Media Generator which are in turn 'read' by the R4i MobieTP Viewer on Android.



R4i MobieTP can be distributed using the R4i CDMS. The CDMS resides between the CSDB and the IETP end user and manages R4i MobieTP software upgrades and IETP package downloads.

Optimized for small screens and large fingers, the native Mobile IETP Viewer is simple to use and can access content in both online and offline modes.

Supported operating systems are Android Kit Kat and Android Ice Cream Sandwich.

ADG's R4i Viewer is utilized by leading organizations and Defense Department's around the world, including, the U.S. Air Force, the Italian Air Force, the Australian Department of Defence and the U.S. Coast Guard.

Learn more

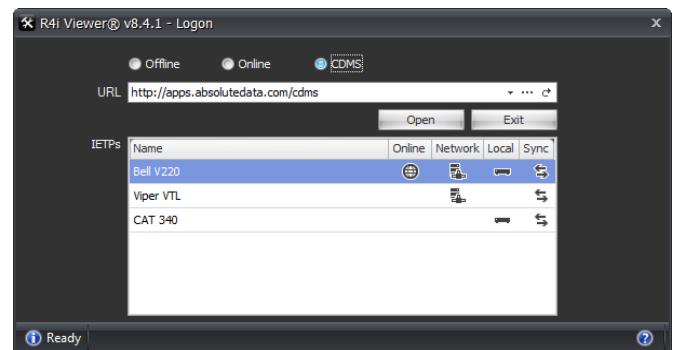
To find out more about R4i CDMS® or to have a one-on-one demonstration, contact the OneStrand team on +1 (503) 558 5000 or email info@onestrand.com. For more information, visit www.onestrand.com

R4i Viewer

A royalty-free IETP viewing application for Windows users. The **R4i Viewer** is an intelligent content access tool that provides operators and maintainers with an interactive and unified view of manuals, e-learning courseware and maintenance job tasking. IETP packages are generated from the R4i CSDB's Media Generator which are in turn 'read' by the R4i Viewer.

The R4i Viewer supports the dynamic presentation of any SGML, XML and PDF formats, as well as images, audio, video and written content.

The R4i Viewer operates in online real-time mode connected to the CSDB, and standalone offline mode.



The R4i Viewer for Windows can be started in two user selectable modes:

- **PC Mode** - which is optimized for large PC screens and laptops with a keyboard and mouse; or
- **Tablet Mode** – which is optimized for Windows 8.x/10 tablets and is designed for human "touch" operation.

The Viewer user can easily be switched between either mode at any time .