

The R4i Common Source Database (CSDB) Server enables organizations to create, manage and publish business critical content in electronic and hard copy formats.

The R4i CSDB Server® enables organizations to create, manage and publish maintenance and operational content electronically (as Interactive Electronic Technical Manuals) or in hard copy (as PDFs) using ADG's R4i Binder™ with Change Packaging.

A powerful tool

ADG's R4i CSDB product suite is for customers that need:

- their technical or field information to comply with industry specifications, such as ASD S1000D, ATA Spec 2100 , iSpec 2200, iSpec 2300, MilSpec, Shipdex, Raildex, DITA and others
- to re-use information across multiple platforms or projects
- to extend beyond traditional paper documents in the field
- to deliver content to multiple devices or formats including paper, web, in-vehicle console and off-line

The R4i CSDB Server®, via the R4i CSDB Client software, controls the versioning, publishing and management of technical data illustrations and maintenance and project data.

Five tools in one

The R4i CSDB Server® includes powerful tools that work together to deliver interactive electronic technical manuals (IETMs) and Adobe PDF Manuals.

The R4i Difference

- The R4i CSDB Server® is easy to install, manage and operate
- Instant validation of data modules references including other data modules, images and external publications listed in the CSDB
- Management of SGML and XML Data Modules
- Management of multiple specification versioned data in one CSDB
- Applicability management delivered to the IETP
- Online or offline IETM access out in the field
- Apply soft or hard date expiry to prevent access to outdated content
- Incorporate "just in time" training data within the IETM
- Support for legacy content including PDF, PPT, Word and Excel formats

The screenshot displays the R4i CSDB Client software interface. The main window is titled "R4i CSDB Client@ Personal Edition 9.0.1.12". The interface is divided into several sections:

- Navigation:** Includes buttons for Refresh, Back, Forward, New, Delete, Rename, Show All Files, Export, Import, Check out, Check In, Reset Checkout, Uncontrolled Copy, Unpublish, Add, Quickview, History, Restore, Uncontrolled Copy, Recycle Bin, Search, Create IETP, Import Review Data, and Export grid.
- File List:** A table with columns for Status, Filename, and Title. The table contains multiple rows of files, all with a status of "Baseline". The selected row is:

Status	Filename	Title
Baseline	1.0 ICN-ADGTRAIN-RF0001-A-ZOCE4-00016-A-001-0-1.jpg	
Baseline	1.0 ICN-ADGTRAIN-RF0001-A-ZOCE4-00017-A-001-0-1.jpg	
Baseline	1.0 ICN-ADGTRAIN-RF0001-A-ZOCE4-00018-A-001-0-1.jpg	
Baseline	1.0 ICN-ADGTRAIN-RF0001-A-ZOCE4-00019-A-001-0-1.jpg	
Baseline	1.0 ICN-ADGTRAIN-RF0001-A-ZOCE4-00020-A-001-0-1.jpg	
Baseline	1.0 ICN-ADGTRAIN-RF0001-A-ZOCE4-00021-A-001-0-1.jpg	
Baseline	1.0 ICN-ADGTRAIN-RF0001-A-ZOCE4-00022-A-001-0-1.jpg	
Baseline	1.0 ICN-ADGTRAIN-RF0001-A-ZOCE4-00023-A-001-0-1.jpg	
Baseline	1.0 ICN-ADGTRAIN-RF0001-A-ZOCE4-00024-A-001-0-1.jpg	
Baseline	1.0 ICN-ADGTRAIN-RF0001-A-ZOCE4-00025-A-001-0-1.jpg	
Baseline	1.0 ICN-ADGTRAIN-RF0001-A-ZOCE4-00026-A-001-0-1.jpg	
Baseline	1.0 ICN-ADGTRAIN-RF0001-A-ZOCE4-00027-A-001-0-1.jpg	
Baseline	1.0 ICN-ADGTRAIN-RF0001-A-ZOCE4-00028-A-001-0-1.jpg	
Baseline	1.0 ICN-ADGTRAIN-RF0001-A-ZOCE4-00029-A-001-0-1.jpg	
Baseline	1.0 ICN-ADGTRAIN-RF0002-A-ZOCE4-00030-A-001-0-1.jpg	
Baseline	1.0 ICN-ADGTRAIN-RF0002-A-ZOCE4-00031-A-001-0-1.jpg	
Baseline	1.0 ICN-ADGTRAIN-RF0002-A-ZOCE4-00032-A-001-0-1.jpg	
Baseline	1.0 ICN-ADGTRAIN-RF0002-A-ZOCE4-00033-A-001-0-1.jpg	
Baseline	1.0 ICN-ADGTRAIN-RF0002-A-ZOCE4-00034-A-001-0-1.jpg	
Baseline	1.0 ICN-ADGTRAIN-RF0002-A-ZOCE4-00035-A-001-0-1.jpg	
Baseline	1.0 ICN-ADGTRAIN-RF0002-A-ZOCE4-00036-A-001-0-1.jpg	
Baseline	1.0 ICN-ADGTRAIN-RF0002-A-ZOCE4-00037-A-001-0-1.jpg	
Baseline	1.0 ICN-ADGTRAIN-RF0002-A-ZOCE4-00038-A-001-0-1.jpg	
Baseline	1.0 ICN-ADGTRAIN-RF0002-A-ZOCE4-00039-A-001-0-1.jpg	
- Quick View:** A technical diagram titled "Injector Closed End Of Injection". It shows a cross-section of an injector with labels: Solenoid Valve, Control Chamber, Valve Ball, and Nozzle Needle. A red arrow points to the Valve Ball, and another red arrow points to the Nozzle Needle.

R4i CSDB Server

secure.manage.deliver

How the five tools integrate to benefit you

R4i CSDB Client

The R4i CSDB Client is the easy to use interface for all CSDB Management. This includes job task and the generation of released content. Using the optional Media Generator module, a Data Delivery (DDN) package, HTML IETP for touch devices or IETP Package for the free R4i Viewer can all be created in minutes.

R4i Data Module Manager

The cornerstone of any ASD S1000D solution is the ability to apply business rules and manage the Data Module Requirements List (DMRL), the Data Module List (DML) and the Common Source Database List (CSL). The Data Module Manager is an integrated CSDB tool used to automatically generate the projects Data Module shells and generate these three reports as required for deliveries.

R4i Fault Code Manager

The R4i Fault Code Manager is used to record fault information about the equipment or system. All the information contained within the Fault Code Manager can be accessed within an IETM when using R4i Viewer®.

R4i Cross-Reference Manager

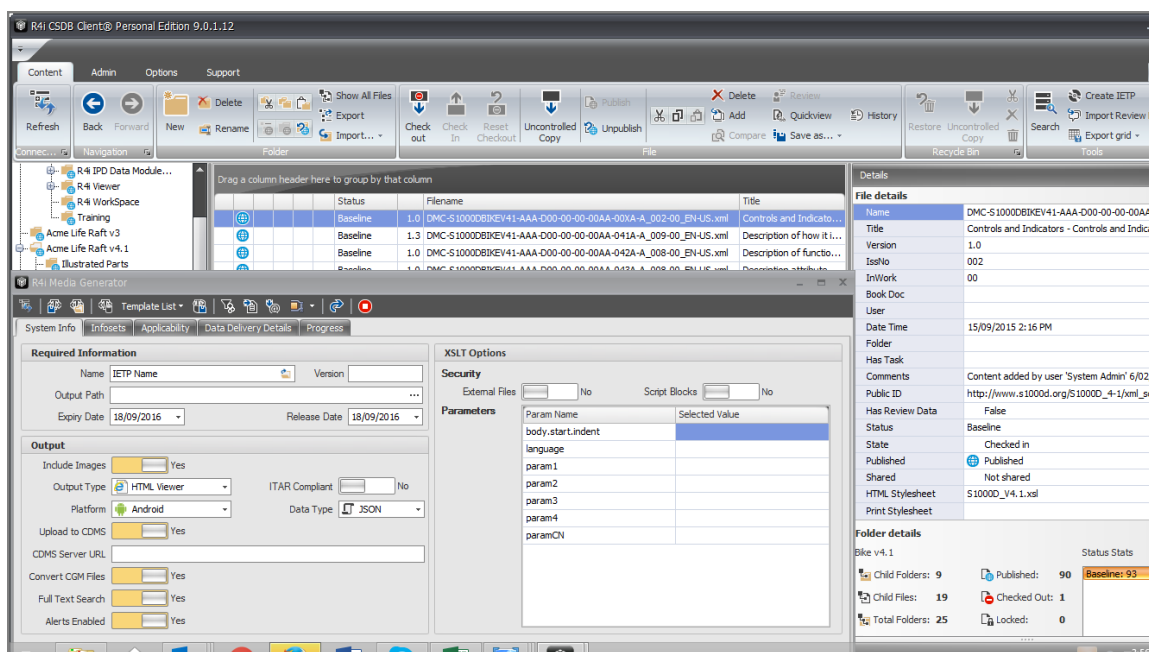
The R4i Cross-Reference Manager integrates legacy SGML/XML authoring tools such as FrameMaker® and Arbortext Editor™ into the R4i CSDB environment. With cross-reference manager, insertion of Graphics, Referenced Data Modules or Applicability allows the author to be able to view, access and auto-reference objects with all the required mark-up from within the R4i CSDB. The links to these objects are then maintained by the R4i Common Source Database (CSDB), link management tools.

R4i Viewer

The R4i Viewer® supports dynamic presentation of SGML, XML and PDF formats, as well as audio, video and other written content. ADG's R4i Viewer® has been approved for use on the U.S. Air Force Grid, U.S. Coast Guard Network and Australian Defence Restricted Network.

The R4i Viewer® is royalty free to distribute with R4i CSDB content. It offers:

- advanced search, including parts searching
- a free CGM viewer
- bookmark, cookie-trail and other easy navigation capabilities
- full support for multi-directional hotspotting with CGM graphics
- support for dynamic presentation of SGML and XML data
- the ability for maintainers in the field to provide feedback via the "Tech Note" facility



Learn more

To find out more about R4i CSDB Server® or to have a one-on-one demonstration, contact the OneStrand team on +1 (503) 558 5000 or email sales@onestrand.com.

For more information on the complete R4i Suite visit www.onestrand.com

OneStrand