

Author S1000D Data Modules in Arbortext Editor v5.4, 6 and 7 and browse directly into the R4i CSDB to easily insert references to Data Modules, External Technical Publications, Images and Applicability element blocks.

Faster, Easier S1000D Content Creation

R4i WorkSpace® is a powerful plug-in for Arbortext Editor v5.4, 6 and 7. R4i WorkSpace installs with schemas and stylesheets for S1000D versions 2.2 XML through to 4.2 of the ASD S1000D Specification. Technical Authors can work in their native Arbortext Editor environment whilst accessing Data Modules, images and other resources directly from the R4i CSDB Server.

The tool eliminates the need for authors to use multiple tools, providing direct access into the hosted or locally installed R4i S1000D Common Source DataBase.

Templates driven by selected Schema and BREX - When you start a new DM, the Schema you select will be read and will load up a document with all mandatory elements and attributes, based on schema definition combined with rules set by the BREX. A pre-configured DMCode structure along with default text values will be assigned to all the mandatory elements and attributes.

SmartSave - Save your document with any name. When you check the DM into the R4i CSDB, R4i WorkSpace will scan the

file to find the DMCode value assigned and correctly name the file to the S1000D specification as the file is added into the R4i CSDB!

Seamless Arbortext Editor CSDB Integration

- **No jumping between multiple S1000D products** – Stay inside the Arbortext authoring environment to check-in, checkout and reset checked-out Data Modules in the Common Source Database.
- **Save publishing time** – The R4i WorkSpace Preview window allows the author to see how the Data Module will look when it is published to an Interactive Electronic Technical Manual (IETM).
- **Reduce authoring time** by 5 minutes for every:
 - Image insertion,
 - Reference to a Data Module, and
 - Reference to External Publications

With direct access into the R4i CSDB Server, users can search, browse and preview image, data module and external publication content, before insertion of the reference.

| File name | Title |
|--|-------|
| FRC-2009-04-29-v1.nwd | |
| FRC-2010-09-21-v1.nwd | |
| ICN-07GB6-BIKECI0001-001-01.CGM | |
| ICN-AE-A-000000-0-48025-00502-A-01-1.cgm | |
| ICN-AE-A-000000-0-48025-00536-A-01-1.cgm | |
| ICN-AE-A-000000-0-48025-00501-A-01-1.cgm | |
| ICN-AE-A-000000-0-48025-00504-A-01-1.cgm | |
| ICN-AE-A-000000-0-48025-00505-A-01-1.cgm | |
| ICN-AE-A-000000-0-48025-00506-A-01-1.cgm | |
| ICN-AE-A-000000-0-48025-00507-A-01-1.cgm | |
| ICN-AE-A-000000-0-48025-00536-A-01-1.cgm | |
| ICN-AE-A-000000-0-48025-00502-A-01-1.cgm | |
| ICN-AE-A-01010-0-48025-00508-A-01-1.cgm | |
| ICN-AE-A-01010-0-48025-00509-A-01-1.cgm | |
| ICN-AE-A-01010-0-48025-00510-A-01-1.cgm | |
| ICN-AE-A-01010-0-48025-00511-A-01-1.cgm | |
| ICN-AE-A-10000-0-48025-00512-A-01-1.cgm | |

The parts that you can immediately identify on a bicycle are given in **InternalRef**.

| Item | Refer to | Definition |
|------|----------|------------------------|
| | | Table 1- Bicycle parts |

Command: dmodule content description levelledPara |

- **Zero errors** - The auto-insertion of all the correct ICN, DMC and REFTP elements and attribute information ensures authors don't get the reference wrong.
- **Prevent incorrect applicability filtering blocks being added** - Direct access to the R4i CSDB Server® with an easy, drag and drop interface of ACT module content, ensures applicability mark-up is inserted correctly and easily.
- **Save Authoring time and deliver custom content** – With only one mouse click required to assign applicability IDs (applicRefId) to blocks of content, authors won't have any problem preparing content specific for each equipment make and model for end-customers.
- **Highlight assigned applicability with color view** - A new view menu option of "Applicability Highlighter" is available to assign color to each text block with an applicability ID. Allowing authors a clearer view of which text has applicability conditions set.
- **Dynamic update of common parts, spares, consumables and warnings/caution content** - With direct access and insertion of content from CIR (Common Information Repository) / TIR (Technical Information Repository) modules, references are automatically monitored and the latest single source of content is automatically displayed to end-users of the content.

Consistent Database Driven Content

Leverage the power of Arbortext Editors authoring interface with the power of an S1000D CSDB.

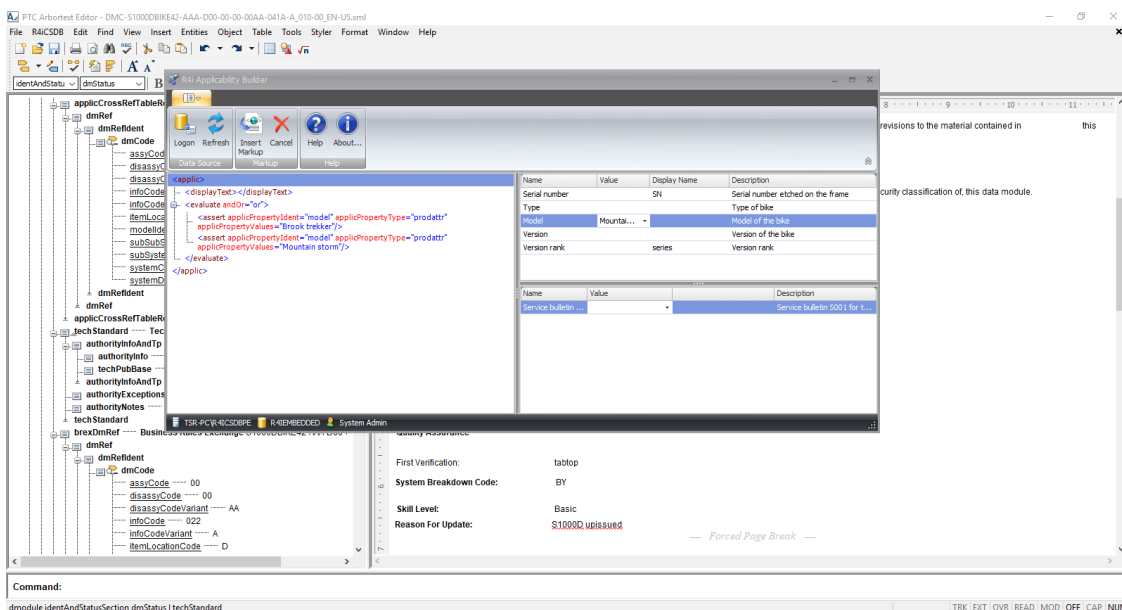
R4i WorkSpace enhances the support of S1000D XML version 2.2 XML to version 4.2 by combining the ability to "look and link" Arbortext Editor directly into the local or hosted R4i CSDB Server®.

S1000D Elements and Attributes that have been mapped to advanced functionality and integration via the R4i WorkSpace interface include:

- dmRef
- figure
- externalPubRef
- applic
- referencedApplicGroup
- accessPointRef
- circuitBreakerRef
- controllIndicatorRef
- functionalItemRef
- supplyRqmtRef (Procedural)
- toolref (Procedural)
- zoneRef (Descriptive)
- applicRefId (Attribute)

System Requirements

- Windows 7, 8, 8.1 and 10
- Microsoft .Net 4.0
- Arbortext Editor v5.4, 6 or 7
- R4i CSDB or hosted CSDB on OneStrand AIR



Learn more

To learn more about the R4i WorkSpace or to have a one-on-one demonstration, email the OneStrand team at sales@onestrand.com or contact us at +1.503.558.5000. For more information, visit us at www.onestrand.com.

