

The R4i Common Source Database (CSDB) Server enables organizations to create, manage and publish business critical content in electronic and hard copy formats.

The R4i CSDB Server® enables organizations to create, manage and publish maintenance and operational content electronically as Interactive Electronic Technical Manuals (IETMs) or in hard copy as hard copy PDFs using the R4i Binder™ and with Change Packaging.

Powerful Features

Easy to install and fast to configure, the R4i CSDB is rich with features that ensure authors are as productive as possible to include:

- **Task management** allows managers to assign users with work and associated files from within the CSDB.
- **Tasking** allows users to view the tasks that they have assigned, including the associated files.
- **Document Compare** allows you to see the differences between selected internal versions of Data Modules.
- **Management Templates** provides the ability to store IETM and Data Delivery templates in the CSDB.
- **Global Search and Replace** gives the ability to replace text globally within Data Modules. This does not affect elements, only text within the element.
- **Resources Store** allows you to store files that are used for the creation of your IETPs, including banners, generic images, cover pages, etc...
- **Recycle Bin** allows management to restore files back into the location within the CSDB that users deleted.

A powerful tool

The R4i CSDB product suite is for customers that need:

- Technical or field information to comply with industry

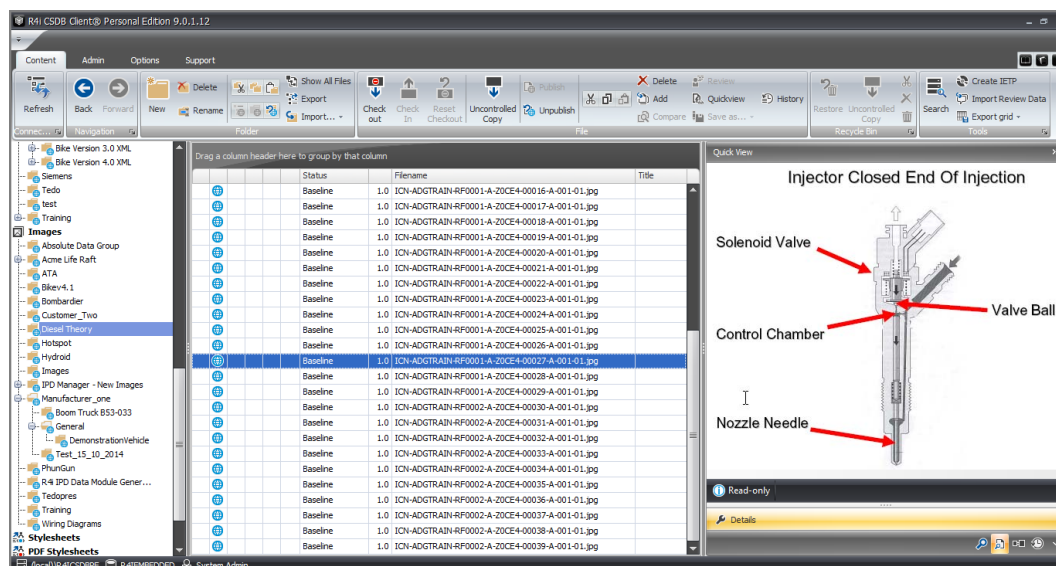
specifications, such as ASD S1000D, ATA Spec 2100 , iSpec 2200, iSpec 2300, MilSpec, Shipdex, Raildex, DITA and others

- To re-use information across multiple platforms or projects
- To extend beyond traditional paper documents in the field
- To deliver content to multiple devices or formats including paper, web, touch devices, in-vehicle console, in on-line and off-line modes

The R4i CSDB Server®, via the R4i CSDB Client software, controls the versioning, publishing and management of technical data illustrations and maintenance and project data.

The R4i Difference

- The R4i CSDB Server® is easy to install, manage and operate. Available to be installed on customer site or hosted in the OneStrand AIR cloud.
- Instant validation of data modules references including other data modules, images and external publications listed in the CSDB
- Management of SGML and XML Data Modules
- Management of multiple specification versioned data in one CSDB
- Applicability management delivered to the IETM
- Online or off-line IETM access out in the field
- Apply soft or hard date expiry to prevent access to outdated content
- Incorporate “just in time” training data within the IETM
- Support for legacy content including PDF, PPT, Word and Excel formats



Benefits of integrating FOUR tools in ONE

The R4i CSDB Server® includes four powerful tools that work together to deliver Interactive Electronic Technical Manuals (IETMs) and Adobe PDF Manuals.

R4i CSDB Client with Integrated Task Management

The R4i CSDB Client is the easy to use interface for all CSDB Management. This includes job task and the generation of released content. Using the optional Media Generator module, a Data Delivery (DDN) package, HTML IETM for touch devices or IETM Package for the free R4i Viewer can all be created in minutes.

R4i Data Module Manager

The cornerstone of any ASD S1000D solution is the ability to apply business rules and manage the Data Module Requirements List (DMRL), the Data Module List (DML) and the Common Source Database List (CSL). The **Data Module Manager** is an integrated R4i CSDB tool used to automatically generate the projects Data Module shells and generate these reports as required for deliveries.

R4i Fault Code Manager

The R4i Fault Code Manager is used to record fault information about the equipment or system. All the information contained within the Fault Code Manager can be accessed within an IETM when using the R4i Viewer®.

R4i Viewer

The R4i Viewer® supports dynamic presentation of SGML, XML and PDF formats, as well as audio, video and other written content.

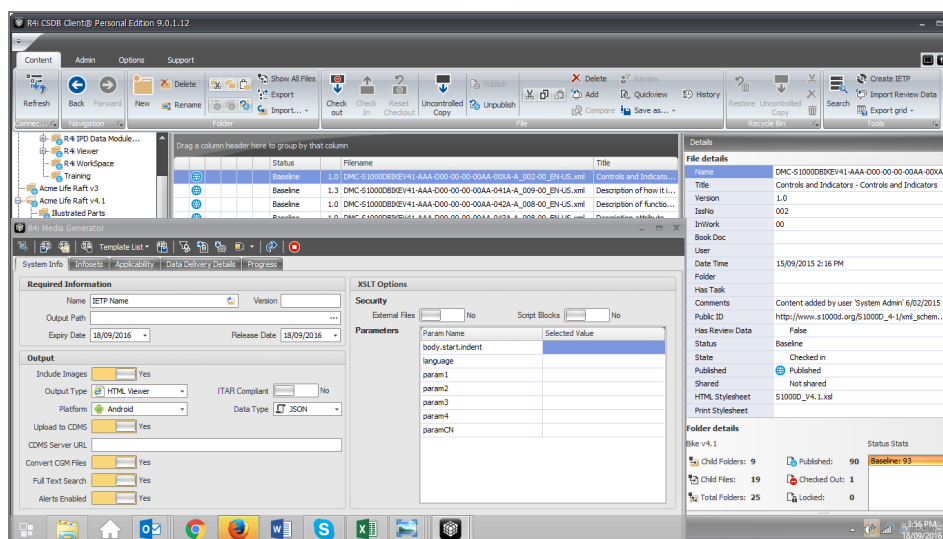
The R4i Viewer is royalty FREE to distribute with R4i CSDB content.

The R4i Viewer offers:

- Advanced search, including parts searching
- A FREE CGM viewer
- Bookmark, cookie-trail and other easy navigation capabilities
- Full support for multi-directional hotspotting with CGM graphics
- Support for dynamic presentation of SGML and XML data
- The ability for maintainers in the field to provide feedback via the "Tech Note" feature, or via Comment Module with R4i ReViewer
- Applicability management controlled in IETM
- Online or off-line IETM access out in the field
- The ability to apply soft or hard date expiry to prevent access to outdated content
- Integration of "just in time" training within the IETM
- Support for legacy content including SGML, PDF, PPT, Word and Excel formats
- Allow Data Modules to be found via custom DMC filtering

The U.S. Air Force Grid, U.S. Coast Guard Network and the Australian Defence Restricted Network has approved the R4i Viewer® for use.

R4i Viewer is also utilized by leading organizations and Defense Department's around the world, including, the U.S. Air Force, the Italian Air Force, the Australian Department of Defense and the U.S. Coast Guard.



Learn more

To learn more about the R4i CSDB or to have a one-on-one demonstration, email the OneStrand team at sales@onestrand.com or contact us at +1.503.558.5000.

For more information, visit us at www.onestrand.com.

R4i CSDB Server and R4i Viewer are registered Trademarks of Absolute Data Group Pty Ltd.

